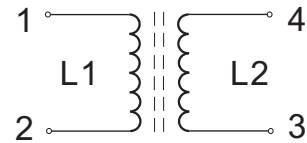


Common Mode Chokes

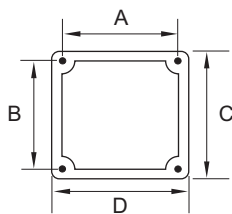


Features and Applications

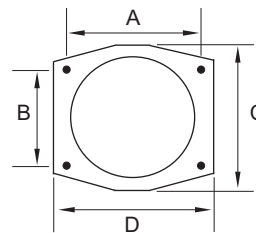
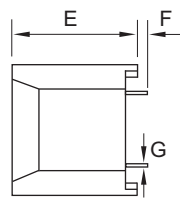
- Easy assembling due to 4 pin housing.
- 400uH to 50mH, 0.3A to 6A.
- Compact and small size.
- Power line filter.
- SMPS.
- Electrical Schematic:



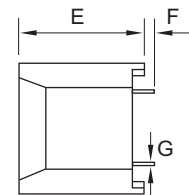
Dimensions and Footprint (Unit:mm)



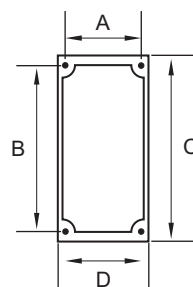
CMH102



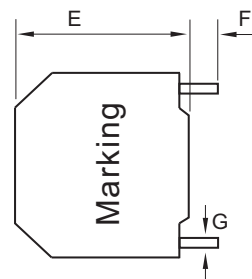
CMH112,114,116,122,142,143,152



Horizontal



CMH202,212,214,216,218,222,232,242



Vertical

Dimensions and Footprint (Unit:mm)

Type	A	B	C	D	E	F	G(Ref)
CMH102	10±0.6	10±0.6	14±0.3	14±0.3	9±0.3	4±0.5	0.6
CMH112	15±0.6	10±0.6	17.1±0.3	17.7±0.3	12.6±0.3	4±0.5	0.8
CMH114	20±0.6	12.5±0.6	21.5±0.3	22.5±0.3	13.2±0.3	4±0.5	0.8
CMH116	20±0.6	12.5±0.6	21.5±0.3	22.5±0.3	13.2±0.3	4±0.5	0.8
CMH122	25±0.6	15±0.6	27±0.3	28±0.3	16.5±0.3	4±0.5	0.8
CMH142	30±0.6	20±0.6	32.5±0.3	33.1±0.3	19.7±0.3	4.3±0.5	0.8
CMH143	30±0.6	20±0.6	32.5±0.3	33.1±0.3	19.7±0.3	4.3±0.5	0.8
CMH152	40±0.6	15±0.6	41.8±0.3	43±0.3	25±0.3	4.5±0.5	1.2
CMH202	5.1±0.6	15.2±0.6	18.2±0.3	8.8±0.3	13.5±0.3	4.5±0.5	0.8
CMH204	7.6±0.6	10.0±0.6	14.0±0.3	9.0±0.3	14.3±0.3	4.5±0.5	0.5
CMH212	10±0.6	15±0.6	18±0.3	12.5±0.3	20±0.3	4.0±0.5	0.8
CMH214	12.5±0.6	10±0.6	23±0.3	15.5±0.3	25±0.3	4.0±0.5	0.8
CMH216	12.5±0.6	10±0.6	23±0.3	15.5±0.3	25±0.3	4.0±0.5	0.8
CMH218	10±0.6	12.5±0.6	18±0.3	12.5±0.3	20±0.3	4.0±0.5	0.8
CMH222	15±0.6	12.5±0.6	31±0.3	18±0.3	29.3±0.3	4.2±0.5	0.8
CMH232	15±0.6	12.5±0.6	31±0.3	18±0.3	34.3±0.3	4.2±0.5	0.8
CMH242	15±0.6	12.5±0.6	31±0.3	18±0.3	34.3±0.3	4.2±0.5	0.8

Electrical Specifications-CMH102

P/N	INDUCTANCE (mH)	DCR(Max) (Ω)	IDC(Max) (A)	TEST FREQ (kHz)
CMH102-112	1.1	0.070	2.0	100
CMH102-162	1.6	0.094	1.5	100
CMH102-302	3	0.210	1.0	100
CMH102-442	4.4	0.380	0.6	100
CMH102-123	12	1.100	0.3	100
CMH102-223	22	1.300	0.3	100

Electrical Specifications-CMH112

P/N	INDUCTANCE (mH)	DCR(Max) (Ω)	IDC(Max) (A)	TEST FREQ (kHz)
CMH112-701	0.7	0.024	4.0	100
CMH112-401	0.4	0.027	3.6	100
CMH112-102	1	0.070	2.0	100
CMH112-182	1.8	0.074	2.0	100
CMH112-332	3.3	0.102	1.5	100
CMH112-682	6.8	0.250	1.2	100
CMH112-103	10	0.380	0.8	100
CMH112-153	15	0.490	0.6	100
CMH112-183	18	1.100	0.5	100
CMH112-273	27	1.200	0.5	100
CMH112-393	39	1.500	0.4	100

Electrical Specifications-CMH114

P/N	INDUCTANCE (mH)	DCR(Max) (Ω)	IDC(Max) (A)	TEST FREQ (kHz)
CMH114-152	1.5	0.034	4.0	100
CMH114-202	2	0.052	3.0	100
CMH114-332	3.3	0.072	2.5	100
CMH114-422	4.2	0.100	2.0	100
CMH114-682	6.8	0.123	1.5	100
CMH114-103	10	0.195	1.2	100
CMH114-153	15	0.370	1.0	100
CMH114-273	27	0.500	0.8	100
CMH114-393	39	0.830	0.5	100
CMH114-473	47	1.700	0.3	100

Electrical Specifications-CMH116

P/N	INDUCTANCE (mH)	DCR(Max) (Ω)	IDC(Max) (A)	TEST FREQ (kHz)
CMH116-222	2.2	0.066	2.0	100
CMH116-332	3.3	0.070	2.0	100
CMH116-402	4	0.087	1.7	100
CMH116-682	6.8	0.140	1.3	100
CMH116-103	10	0.148	1.5	100
CMH116-153	15	0.260	1.0	100
CMH116-273	27	0.370	0.8	100
CMH116-393	39	0.920	0.5	100
CMH116-473	47	0.960	0.5	100

Electrical Specifications-CMH122

P/N	INDUCTANCE (mH)	DCR(Max) (Ω)	IDC(Max) (A)	TEST FREQ (kHz)
CMH122-182	1.8	0.042	4.0	100
CMH122-332	3.3	0.046	4.0	100
CMH122-452	4.5	0.080	3.0	100
CMH122-502	5	0.140	2.0	100
CMH122-562	5.6	0.110	2.5	100
CMH122-682	6.8	0.156	2.0	100
CMH122-103	10	0.250	1.5	100
CMH122-183	18	0.630	1.0	100
CMH122-393	39	1.000	0.8	100
CMH122-473	47	1.300	0.6	100
CMH122-563	56	1.800	0.5	100

Electrical Specifications-CMH142

P/N	INDUCTANCE (mH)	DCR(Max) (Ω)	IDC(Max) (A)	TEST FREQ (kHz)
CMH142-182	1.8	0.020	6.0	100
CMH142-332	3.3	0.067	4.0	100
CMH142-682	6.8	0.192	2.0	100
CMH142-273	27	0.500	1.4	100
CMH142-333	33	0.810	1.0	100
CMH142-823	82	2.700	0.5	100

Electrical Specifications-CMH143

P/N	INDUCTANCE (mH)	DCR(Max) (Ω)	IDC(Max) (A)	TEST FREQ (kHz)
CMH143-182	1.8	0.020	6.0	100
CMH143-392	3.9	0.059	4.0	100
CMH143-103	10	0.240	2.0	100
CMH143-473	47	0.890	1.0	100
CMH143-104	100	2.900	0.5	100

Electrical Specifications-CMH152

P/N	INDUCTANCE (mH)	DCR(Max) (Ω)	IDC(Max) (A)	TEST FREQ (kHz)
CMH152-182	1.8	0.014	10.0	100
CMH152-272	2.7	0.022	8.0	100
CMH152-392	3.9	0.042	6.0	100
CMH152-682	6.8	0.087	4.0	100
CMH152-183	18	0.350	2.0	100
CMH152-683	68	1.300	1.0	100

Electrical Specifications-CMH202

P/N	INDUCTANCE (mH)	DCR(Max) (Ω)	IDC(Max) (A)	TEST FREQ (kHz)
CMH202-112	1.1	0.070	2.0	100
CMH202-162	1.6	0.094	1.5	100
CMH202-302	3	0.210	1.0	100
CMH202-442	4.4	0.380	0.6	100
CMH202-123	12	1.100	0.3	100
CMH202-223	22	1.300	0.3	100

Electrical Specifications-CMH204

P/N	INDUCTANCE (mH)	DCR(Max) (Ω)	IDC(Max) (A)	TEST FREQ (kHz)
CMH204-112	1.1	0.070	2.0	100
CMH204-162	1.6	0.094	1.5	100
CMH204-302	3	0.210	1.0	100
CMH204-442	4.4	0.380	0.6	100
CMH204-123	12	1.100	0.3	100
CMH204-223	22	1.300	0.3	100

Electrical Specifications-CMH212

P/N	INDUCTANCE (mH)	DCR(Max) (Ω)	IDC(Max) (A)	TEST FREQ (kHz)
CMH212-401	0.4	0.024	4.0	100
CMH212-701	0.7	0.027	3.6	100
CMH212-102	1	0.070	2.0	100
CMH212-182	1.8	0.074	2.0	100
CMH212-332	3.3	0.102	1.5	100
CMH212-682	6.8	0.250	1.2	100
CMH212-103	10	0.380	0.8	100
CMH212-153	15	0.490	0.6	100
CMH212-183	18	1.100	0.5	100
CMH212-273	27	1.200	0.4	100
CMH212-393	39	1.500	0.4	100

Electrical Specifications-CMH214

P/N	INDUCTANCE (mH)	DCR(Max) (Ω)	IDC(Max) (A)	TEST FREQ (kHz)
CMH214-152	1.5	0.034	4.0	100
CMH214-202	2	0.052	3.0	100
CMH214-332	3.3	0.072	2.5	100
CMH214-222	2.2	0.067	2.0	100
CMH214-422	4.2	0.100	2.0	100
CMH214-682	6.8	0.123	1.5	100
CMH214-103	10	0.195	1.2	100
CMH214-153	15	0.370	1.0	100
CMH214-273	27	0.500	0.8	100
CMH214-393	39	0.830	0.5	100
CMH214-563	56	1.700	0.5	100
CMH214-473	47	1.700	0.3	100

Common Mode Chokes

Electrical Specifications-CMH216

P/N	INDUCTANCE (mH)	DCR(Max) (Ω)	IDC(Max) (A)	TEST FREQ (kHz)
CMH216-222	2.2	0.066	2.0	100
CMH216-332	3.3	0.070	2.0	100
CMH216-402	4	0.087	1.7	100
CMH216-682	6.8	0.140	1.3	100
CMH216-103	10	0.148	1.5	100
CMH216-153	15	0.260	1.0	100
CMH216-273	27	0.370	0.8	100
CMH216-393	39	0.920	0.5	100
CMH216-473	47	0.960	0.5	100

Electrical Specifications-CMH218

P/N	INDUCTANCE (mH)	DCR(Max) (Ω)	IDC(Max) (A)	TEST FREQ (kHz)
CMH218-332	3.3	0.100	2.2	100
CMH218-682	6.8	0.180	1.7	100
CMH218-103	10	0.330	1.4	100
CMH218-153	15	0.420	1.1	100
CMH218-223	22	0.520	1.0	100
CMH218-273	27	0.620	0.9	100
CMH218-393	39	1.150	0.7	100
CMH218-473	47	1.200	0.6	100
CMH218-104	100	2.800	0.4	100

Common Mode Chokes

Electrical Specifications-CMH222

P/N	INDUCTANCE (mH)	DCR(Max) (Ω)	IDC(Max) (A)	TEST FREQ (kHz)
CMH222-332	3.3	0.046	4.0	100
CMH222-452	4.5	0.080	3.0	100
CMH222-562	5.6	0.110	2.5	100
CMH222-682	6.8	0.156	2.0	100
CMH222-103	10	0.250	1.5	100
CMH222-183	18	0.630	1.0	100
CMH222-333	33	1.300	1.0	100
CMH222-393	39	1.000	0.8	100
CMH222-473	47	1.300	0.6	100
CMH222-563	56	1.800	0.5	100

Electrical Specifications-CMH232

P/N	INDUCTANCE (mH)	DCR(Max) (Ω)	IDC(Max) (A)	TEST FREQ (kHz)
CMH232-332	3.3	0.054	4.0	100
CMH232-562	5.6	0.086	2.5	100
CMH232-103	10	0.170	1.6	100
CMH232-183	18	0.390	1.0	100
CMH232-473	47	1.300	0.6	100

Electrical Specifications-CMH242

P/N	INDUCTANCE (mH)	DCR(Max) (Ω)	IDC(Max) (A)	TEST FREQ (kHz)
CMH242-182	1.8	0.020	6.0	100
CMH242-332	3.3	0.067	4.0	100
CMH242-682	6.8	0.192	2.0	100
CMH242-273	27	0.500	1.4	100
CMH242-333	33	0.810	1.0	100
CMH242-823	82	2.700	0.5	100